



EBM
Weidenstrasse 27
CH-4142 Münchenstein 1
Tel. +41 61 415 41 41
Fax +41 61 415 46 46
ebm@ebm.ch
www.ebm.ch

EBM
26, rue du Rhône
Boîte postale 10028
F-68301 Saint-Louis Cedex
Tél. +33 (0) 389 89 76 40
Fax +33 (0) 389 69 22 03
www.ebm-france.fr



04.11.78.DU/e Photos: Leu & Partner AG, Stefan Kubli, Tobias Sutter and Andreas Zimmermann



Economically, Socially and Ecologically Sustainable



Table of Contents

EBM (Elektra Birseck Cooperative) and EBM Trirhena AG Well Rooted	Page 4
EBM Netz AG In The Right Place at The Right Time	Page 6
EBM Energie AG Tapping New Energy Sources	Page 8
EBM Wärme AG Heating Solutions for Switzerland, France and Germany	Page 10
EBM Telematik AG Internal and External Telecommunications	Page 12
EBM Ecotec AG Renewable Energy and Energy Efficiency	Page 14
Schwarz + Partner AG Comprehensive Electrical Installation Technology	Page 16
World of Learning: Energy Actively Understanding Electricity	Page 18
Sustainability – Actions Speak Louder Than Words Economical Performance, Social and Ecological Responsibility	Page 20

Reliable – Flexible – Marketable

EBM: Economically, Socially and Ecologically Sustainable.

EBM has been operating internationally as a privately organised cooperative in the energy sector since 1897. Its spheres of operation include "Electricity and Network Supply", "Heating", "Telecommunications and IT" as well as "Renewable Energies and Electrical Installations". Today, EBM provides electricity to around 220 000 people in northwestern Switzerland and Alsace. In addition to its core focus, electricity, EBM is the market leader in decentralised heating supply throughout Switzerland as well as in southern Germany and Alsace.

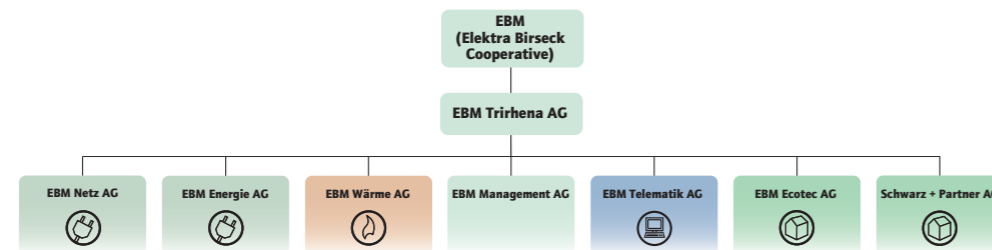
EBM (Elektra Birseck Cooperative) and EBM Trirhena AG

Well Rooted

The cooperative model provides an ideal foundation for EBM to fulfil its task of supplying energy to the public on a private basis, to everyone's benefit.

For more than 100 years, EBM has held firmly to the cooperative principles. However EBM has developed from a traditional energy supplier into a modern, flexible and marketable company. The uppermost committee is still EBM (Elektra Birseck Cooperative), which is supported by around 50000 members. These include private property owners, companies, communes and cantons in EBM's network area.

EBM operates in the market with six companies: EBM Netz AG, EBM Energie AG, EBM Wärme AG, EBM Telematik AG, EBM Ecotec AG and Schwarz + Partner AG. These companies operate in the four strategic spheres of operation "Electricity and Network Supply", "Heating", "Telecommunications and IT" and "Renewable Energies and Electrical Installations".



The central services for the EBM Group, such as marketing, sales, finances, logistics, communications, legal and personnel are performed by EBM Management AG. The seven named companies are under the control of the holding company EBM Trirhena AG, which in turn is a subsidiary company of EBM (Elektra Birseck Cooperative).

Numerous commitments serve to highlight that EBM takes its responsibilities as a cooperative seriously and offers a lot to its customers and the wider population. Examples include the "World of Learning: Energy" programme for schoolchildren and young people, cookery courses, energy consultancy services and the Museum of Electricity opened in 1997.



EBM Netz AG

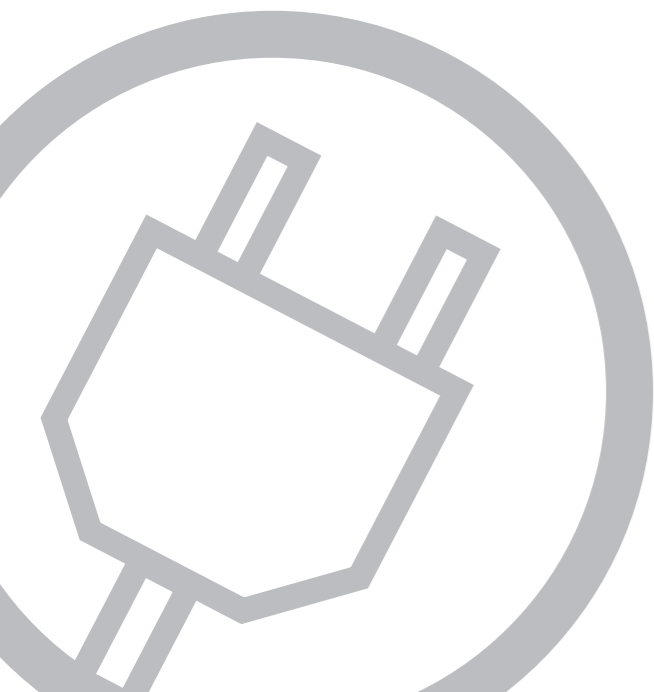
In The Right Place at The Right Time

EBM invests a great deal in the upkeep and reinforcement of its network – so that electricity flow is always reliable.

Electricity cannot be stored. Electrical energy must be readily available exactly when the customer needs it. Therefore the reliability of transportation routes and sufficient capacities are decisive factors for a secure energy supply. The 3545 km long network is actually part of EBM's capital. EBM Netz AG is a network operator according to the definition of the Federal Electricity Supply Act and takes the basic provision required by this role very seriously. EBM provides around 220 000 people with electricity, around the clock.

Therefore the task of EBM Netz AG is to maintain and further develop the security of the energy supply – with the aim of handling energy transportation in the most efficient, reliable and cost-effective way possible. EBM Netz AG is also tasked with bringing basic provision to all customers who are not yet able to choose their supplier. The whole EBM network is centrally monitored and regulated day and night in the network control centre. In order to have an overview of the network capacities at all times, the installations and wiring diagrams are documented in a special information system.

In urban areas, more and more power lines are being laid underground. This has advantages: the environment and residents are less affected and outages are less common. However, moving away from overhead power lines entirely is not possible, especially not in rural areas.



EBM Energie AG

Tapping New Energy Sources

EBM Energie AG is responsible for energy procurement and energy trading for the EBM Group.

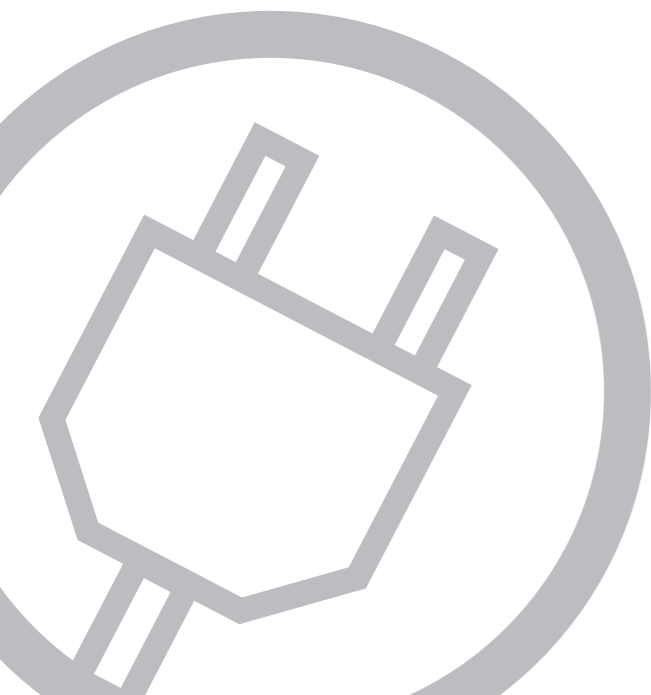
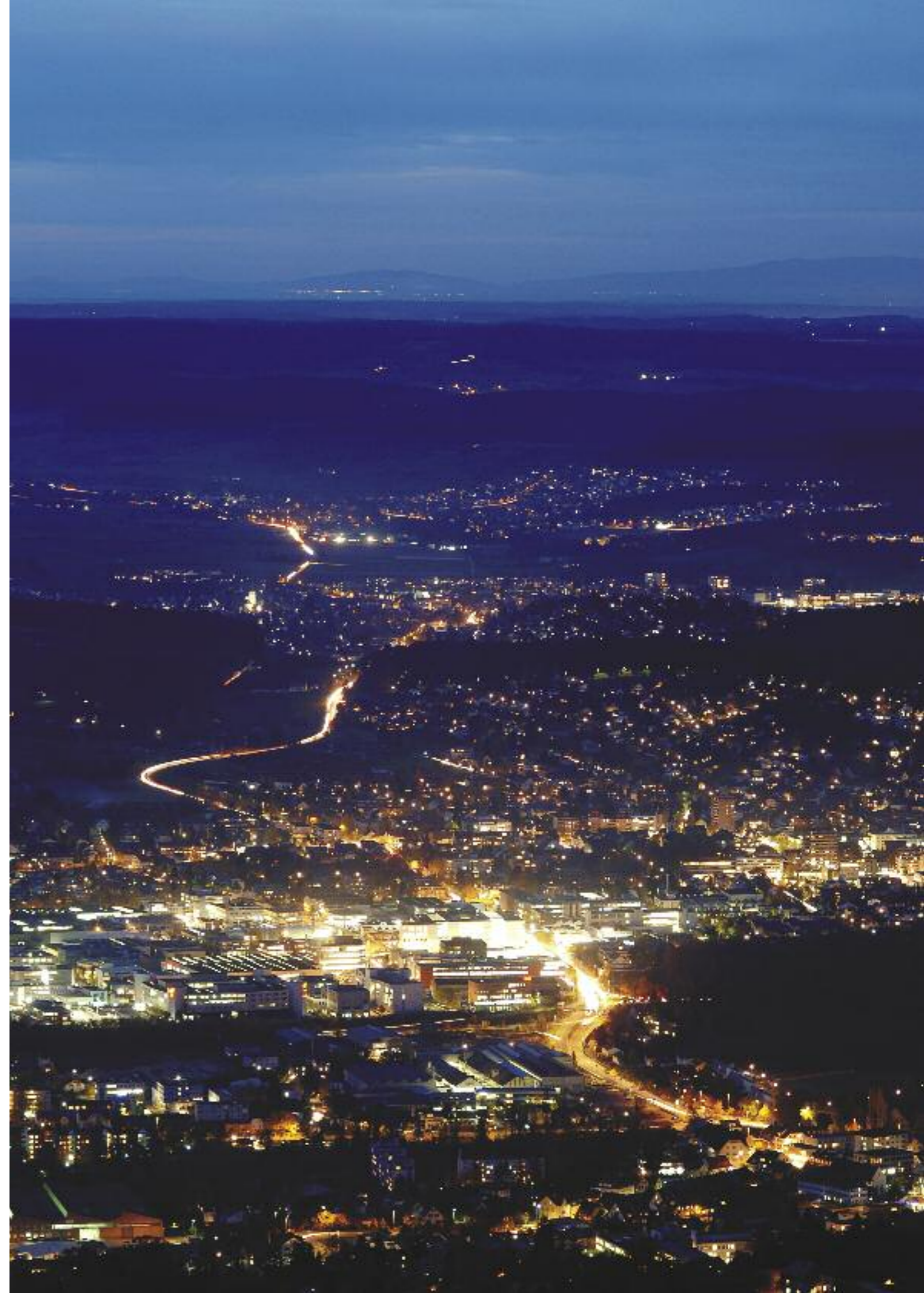
EBM's goal is to identify supply requirements in due time and to supply this requirement reliably, cost-effectively and in an environmentally responsible manner, from all possible energy sources. With its own sales department and a diverse portfolio of power plants, EBM Energie AG guarantees long-term energy procurement for EBM customers.

Competition is slowly beginning to grow in Switzerland. EBM doesn't produce any of its own electricity on a large scale. EBM wants to ensure its future independence too, which, thanks to diversification, it can achieve with additional suppliers and shares in various power stations at home and abroad. With its location in northwestern Switzerland, directly on the border to France and Germany, EBM is predestined to establish itself as a point of intersection between the international market and regional electricity plants. With its shares in Direct Energie SA, as well as the joint trading partnership in France, EBM has already been able to accumulate considerable experience in the liberalised electricity market.

In order to remain competitive and to be able to guarantee a cost-effective and environmentally sustainable electricity supply in the future, EBM continues to pursue its "Both-and-strategy".

EBM highly values climate protection and actively promotes economical and efficient energy usage as well as environmentally friendly electricity production from renewable energies.

With EBM, every customer can select his own electricity package and therefore actively influence EBM's mixture of electricity sources. All of the products from EBM's nature range are *naturemade* electricity products, as certified by VUE (Association for Environmentally Sound Energy).



EBM Wärme AG

Heating Solutions for Switzerland, France and Germany

Why pay for heat if you only need warmth?

So-called heating-contracting is at the forefront of all of EBM Wärme AG's projects. The specialists at EBM Wärme AG work on contracting, constructing and operating the installations, according to the energy sources favoured by customers. As a consequence, the customer receives thermal output as agreed in the contract. Today customers demand predominantly environmentally friendly energy sources such as woodchips, wood pellets or solar energy. Using heating from wastewater and burning waste are also becoming more innovative and environmentally friendly. Of course, heat pumps are also popular. Installations with conventional energy sources can also be found in EBM's portfolio. The potential for contracting costs to be deducted from taxable income is of particular interest to EBM's private customers.

Within large and medium-sized enterprises there is a growing trend to outsource tasks which don't belong to their particular core business. Instead of the firm managing energy installations, supply systems and the disposal of hazardous waste itself, these tasks are being outsourced to specialist companies. With the founding of EBM Industriecontracting AG, EBM has formed a business unit, which offers special outsourcing services. EBM bases this on more than 30 years of experience with its successful, internationally established heating-contracting work. Among the main tasks covered by industry-contracting, are the provisions of steam, electricity and water, as well as the disposal of wastewater and waste.

EBM always assigns special importance to testing the latest technologies. Thus EBM occupies a leading position in Switzerland, which it has been able to expand internationally in the past years with EBM Wärme GmbH in Germany and with EBM Thermique SAS in France.

Heating-contracting is a comfortable and efficient solution. The customer receives the useful energy at the agreed price. EBM takes on everything else: planning of installations, financing, monitoring and inspection of constructions and installations, safeguarding against the construction and operational risks during the contract duration, maintenance and servicing.



EBM Telematik AG

Internal and External Telecommunications

EBM Telematik AG takes care of IT services for EBM's staff. The telecommunication requirements of external business and private customers are taken care of by EBM Telecom AG.

Through the expansion of EBM's own, ultra-modern fibre optic network and data centre, EBM Telecom AG opens the door to the next generation in communications. Availability, speed, stability and security are the main demands on the IT infrastructure, which EBM Telecom AG guarantees for its customers. Due to many years of experience in building and operating its own fibre optic network, EBM is able to offer and guarantee optimal telecommunications solutions.

Individuality is what makes the business model of EBM Telecom AG stand out. A successful telecommunication solution requires appropriate customisation. As a full-service provider, EBM Telecom AG's uppermost mandate is to find solutions specially suited to each company. Thus, the needs of business customers – from the transport of data right through to its safe storage in the data centre – are comprehensively catered for. With the "EBM Voice" telephone service, EMB Telecom AG offers comprehensive convergence of networks, data transfer, data storage and telephone services. "EBM Onehome" offers private customers an attractive combined offer for radio/television, Internet and telephone services, all in one neat package.

EBM Fiber

Location networking via EBM fibre optics.

EBM Ethernet

High-availability, secure data transfer.

EBM Access/EBM Access^{plus}

The fastest possible Internet access – with fibre optics.

EBM Datacenter

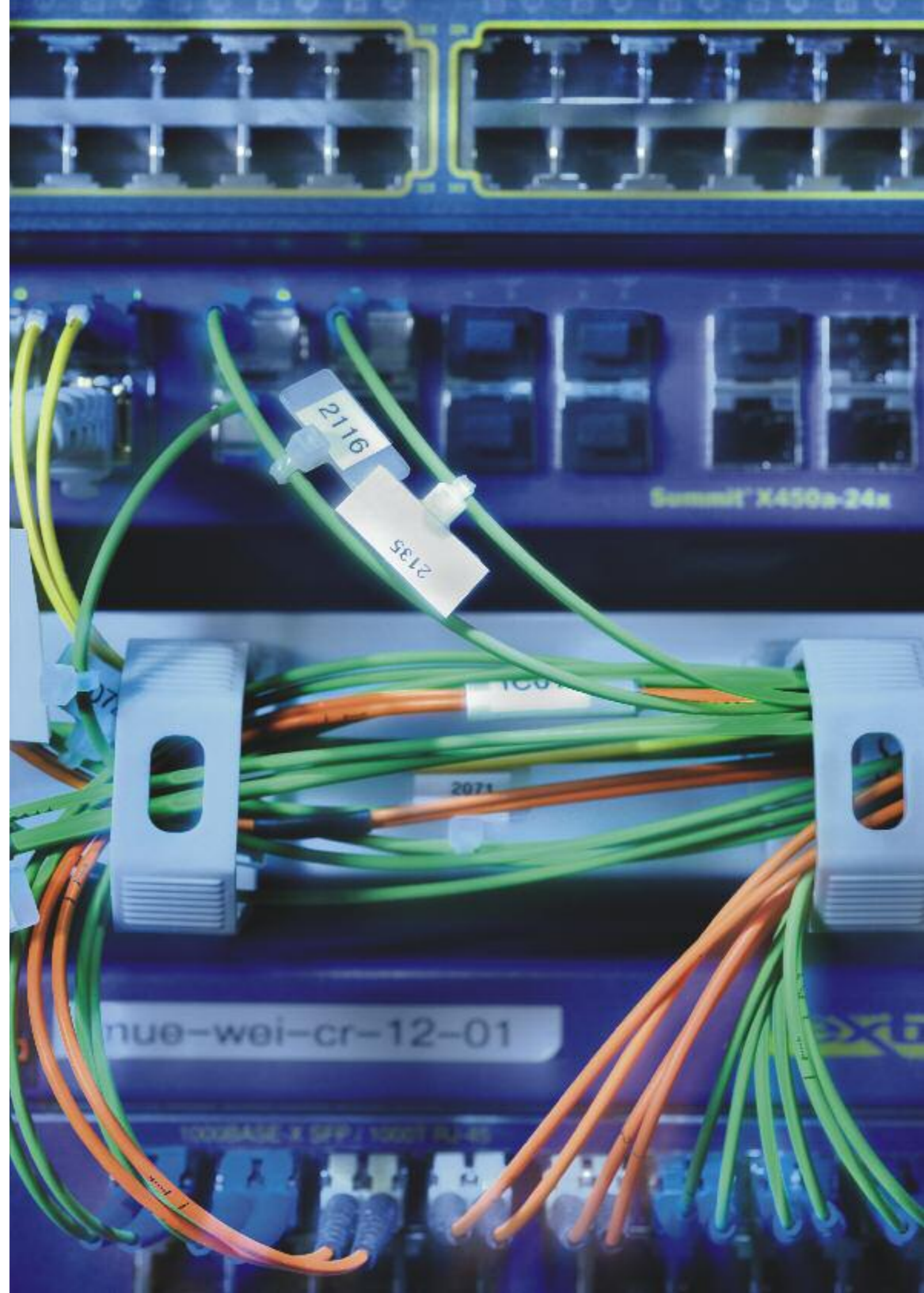
Reliable, professional data storage.

EBM Voice

Customised, cost-effective IP telephone services for business customers.

EBM Onehome

Internet, telephone and radio/TV, the combined offer for private customers.



EBM Ecotec AG

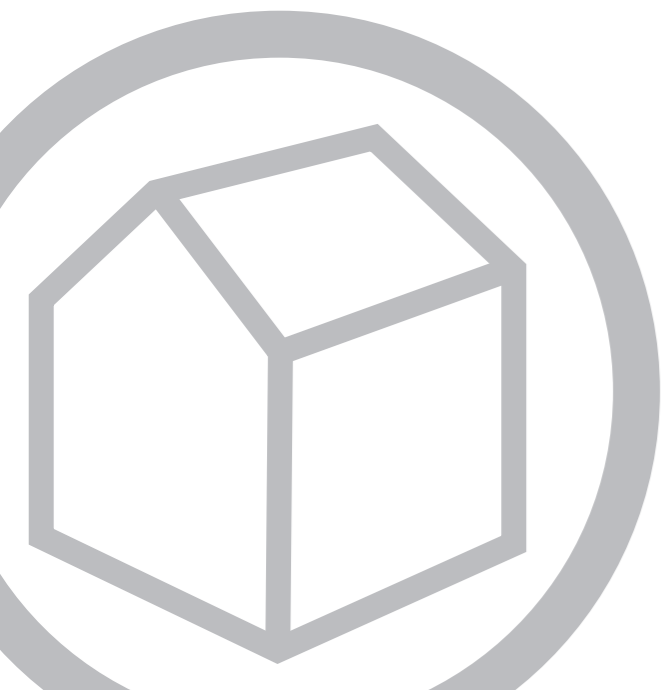
Renewable Energy and Energy Efficiency

From building insulation and photovoltaic installations to heat pumps.

EBM Ecotec AG is a specialist for energy efficiency and renewable energies. Customers are offered expert advice on questions of investing in a sustainable future for energy. EBM Ecotec AG plans and implements production installations for electricity, heating and hot water. Main focus is on property owners, who are interested in renewable energy sources such as solar and environmental heat. Photovoltaic installations, thermal solar installations, heat pumps and pellet heating (EBM online shop for pellets) are designed, delivered, installed and maintained by the specialists at EBM Ecotec AG.

In addition, EBM Ecotec AG carries out energy-related building renovations. Because valuable energy is lost through leaky cladding. It is only with the right insulation that a heating system (in winter) or a cooling system (in summer) can be used without energy loss. Expertly executed building insulation saves a great deal of energy and reduces energy costs. Investing in a sustainable future.

EBM Ecotec AG puts great emphasis on quality and high-value products for sustainable energy production. Natural resources are used sparingly and costs are reduced.



Schwarz + Partner AG

Comprehensive Electrical Installation Technology

Schwarz + Partner AG was founded on 1st January 1990 by Hans Schwarz. EMB took over the company and therefore secured its continued existence.

From consultancy right up to the planning, implementation and maintenance of commissioned work, Schwarz + Partner AG offers extensive expert knowledge. The sphere of operation covers all electrical installation technology, such as electrical planning, engineering and installation, but also telecommunications, alarm systems for TVA/PBX, KIS/SPICS cable information systems and MSRE measurement and control technology.

Schwarz + Partner AG provides vast expert knowledge, comprehensive consultation, planning and implementation for commissioned installation work of all sizes. The Schwarz + Partner specialists in electrical engineering and communications technology find the right solutions for the customer, whether it be for the smallest servicing job, electrical installations in detached homes or apartment blocks, for industrial or commercial buildings or for large buildings.

Head Offices in Reinach

The planning offices are located in Reinach as well as the installation, servicing, MSRE and switchgear departments.

telecom-center Aesch

All appliances can be viewed and tried out on site. Customers are also offered an optimal opportunity to undergo training in using special telephone systems.

telecom-center Sissach

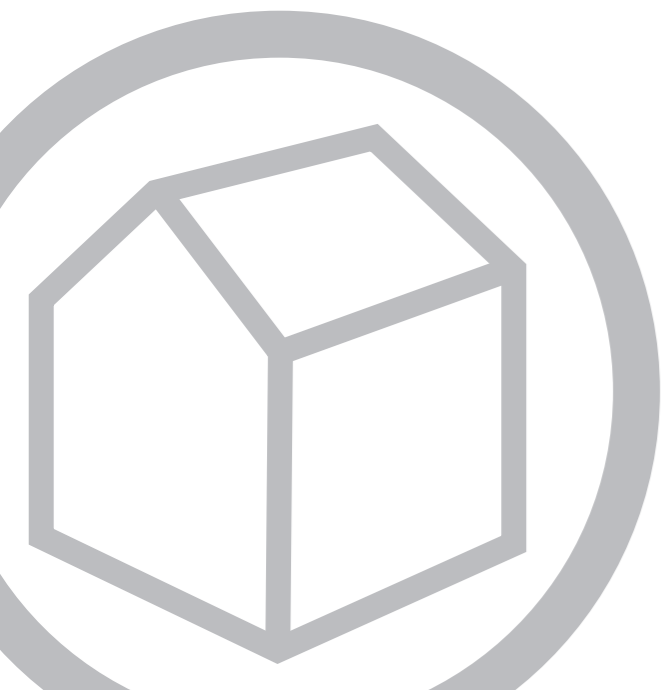
The telecom center and its installations department is responsible for work in the upper Basel region.

telecom-center Basel

Sales of telephones, mobiles and household appliances.

Breitenbach Office

A range of services in the field of electrical installations and electrical servicing.



World of Learning: Energy

Actively Understanding Energy

What is electricity? How is it made? How does it reach our homes?

By offering the "World of Learning: Energy" programme, EBM makes electricity come alive for children and young people and teaches them the necessary basics. With this unique platform, EBM offers – particularly for schools – a clever combination of educational workshops, exciting experiments, interesting tours and teaching materials. EBM provides this programme for free, primarily to schools in northwestern Switzerland and Alsace. The "World of Learning: Energy" is particularly suitable for primary and secondary school levels, as well as for grammar schools. One of EBM's specialities lies in offering packages for children's birthdays and offering courses (solar workshops) under the "Ferienpass" (holiday pass) scheme.

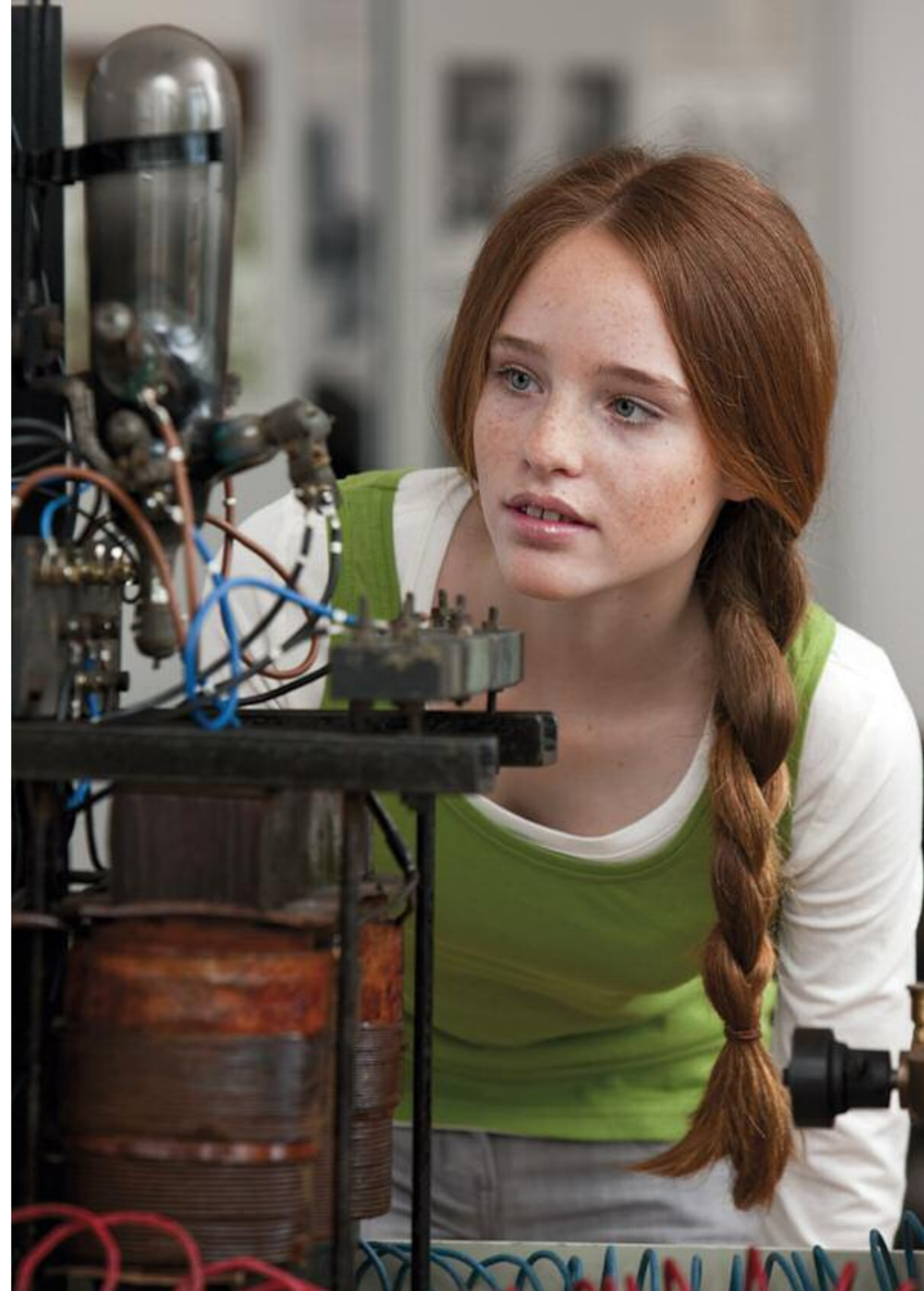
There is always more waiting to be discovered in the world of electricity and it is incredibly exciting. In 1997, on the occasion of the 100th anniversary of the company, EBM opened the Museum of Electricity in Münchenstein. Over an area of 1000 m² of exhibition space, visitors can trace the exciting historical development of the production and use of electricity. The collection includes historical rarities and offers visitors the opportunity to get hands-on.

In addition to schools, companies, associations, organisations, clubs, agencies and political organisations can also book free tours of the Museum of Electricity, as well as of the network control centre and substations. A visit to the Augst hydroelectric plant and the small-scale *naturemade*-certified hydroelectric plant in Dornachbrugg gives an insight into the powerful interaction between water and technology.

The "World of Learning: Energy" comprises all the necessary essentials and materials so that the complex themes and questions surrounding electricity can be presented in a way that is relevant for a classroom environment.

Actively understanding and experiencing energy: in the workshops, EBM offers children and young people an introduction to the world of renewable energies through play.

The experiments are packed full of excitement. Find out more at www.lernwelt-energie.ch



Sustainability – Actions Speak Louder Than Words

Economical Performance, Social and Ecological Responsibility

Real sustainability arises from the interplay between economical performance and social and ecological responsibility.

For decades EBM has promoted economical and efficient electricity usage. With the strategy introduced in 1979, the foundations for sustainable corporate governance were laid. As of 2010, EBM has invested more than 300 million Swiss francs in numerous projects involving sustainable and efficient energy systems.

Economical performance: the health and prosperity of a company is, first and foremost, dependent on economic success. EBM has, in the past more than 100 years, generated considerable equity. EBM operates with great circumspect and maintains a healthy capital structure and sufficient liquidity in order to preserve our freedom to act. EBM achieves transparency by organising its consolidated financial statements according to the guidelines outlined by Swiss GAAP FER.

Social responsibility: EBM represents one of the largest employers in the region. Every year, several commissions are awarded to industries within the network area and considerable sums are given to charitable institutions. Amongst EBM's social and cultural commitments are the on-site cookery courses, the Museum of Electricity and the "World of Learning: Energy" programme for schools.

Ecological responsibility: amongst the pioneering concepts EBM counts various local heating networks, a natural gas expansion plant, the solar energy exchange, as well as the new EBM energy fund. Amongst the products in the field of renewable energy are heat pumps, photovoltaic and solar installations, wind energy plants, woodchip heating, small-scale hydroelectric power plants, waste heat recovery and biomass systems. Certified according to ISO standard 14001, EBM organises its services into five areas "Pioneering Concepts", "Renewable Energies", "Pilot and Demonstration Installations", "Communicating Knowledge" and "Ecological Networking".

EBM's energy consultancy services show tenants and property owners opportunities for using energy more economically and efficiently. EBM offers consultation on cladding, heating or electricity usage, cladding analysis with an advisory report (GEAK® building energy performance rating, energy coach, renovation of individual structural components), analysis of the heating system, complete with draft sketch, or completing an application for funding.



EBM's Milestones since 1979

- 2010** EBM launches an exchange for electricity from natural resources
- 2010** Acquisition of a 42-megawatt wind farm in Spain
- 2009** EBM founds an "energy fund" for cooperative members, financed by 1 million Swiss francs annually
- 2009** In the Allschwil Elco Park, EBM launches the largest geothermal project in the Basel region
- 2009** Inauguration of the first photovoltaic plant in EBM's Alsace network area
- 2008** 111th anniversary celebrations of EBM's existence
- 2008** 11th anniversary of the opening of EBM's Museum of Electricity
- 2008** Founding of heating companies in Germany and France
- 2007** A first for CONCORDIA in Lucerne: heating and cooling from wastewater
- 2007** Shares in Biopower Nordwestschweiz AG
- 2007** Opening of a wood pellet heating installation for Frutiger AG in Thun
- 2006** Large-scale waste heat network from waste incineration in Oftringen
- 2006** Photovoltaic installation on EBM's workshop building
- 2005** Founding of the Basel region energy fund with 2.64 million Swiss francs
- 2005** The EBM Group gains certification for quality security and environmental and occupational safety
- 2005** A first for northwestern Switzerland: resource for schools "World of Learning: Energy"
- 2004** A first for Switzerland: electricity from the expansion of natural gas
- 2004** First woodchip-burning installation in Arlesheim
- 2003** EBM receives the "Naturpark" quality mark for the first time, for the EBM grounds in Münchenstein
- 2003** Use of the first natural gas-driven Stirling engine in Reinach
- 2000** Two-year field test with PEM fuel cell installation
- 2000** Commissioning of the first micro gas turbine
- 1999** Subsidy scheme for heat pumps CO₂-2000
- 1996** A first for Switzerland: photovoltaic clearing
- 1996** New construction of small-scale hydroelectric power plants in Dornachbrugg and Laufen
- 1995** First landfill gas power plant KELSAG, Liesberg
- 1992** A first for Switzerland: "Solar Energy for Everyone" initiative
- 1987** First large-scale installation for the use of transformer waste heat
- 1983** Founding of the first heating association, Wärmeversorgung Binningen AG (WBA)
- 1982** Commissioning of the first co-generation heat and power plant
- 1979** Launch of the energy consultancy and environmentally friendly energy initiatives, incl. subsidy schemes
- 1979** A first for Switzerland: co-generation heat and power plant/heat pumps initiative